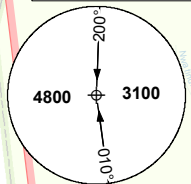


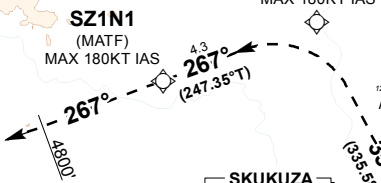


ELEV, ALT & HGT IN FEET
 DIST IN NM
 BRG ARE MAG
 VAR 20°W (2018)

GNSS REQUIRED



- SPEED RESTRICTIONS**
1. UTREX & GETIM MAX 180KT IAS.
 2. SZ2T1 MAX 160KT IAS.
 3. SZ2F1 MAX 140KT IAS.
 4. MISSED APPROACH MAX 180KT IAS.



SKUKUZA FASZ ARP
 24°57'40.76"S
 031°35'19.77"E
 1040'

RW35 (MAPT)
 MAX 180KT IAS

SZ2F1 (FAF) 2210
 MAX 140KT IAS

SZ2T1 (IF) 3290
 MAX 160KT IAS

TMA Hoedspruit Approach
 FL195
 6000FT ALT
 138.4

FAR 71
 FL195
 FL105

LASS
 FL195
 1500FT ALT
 119.00

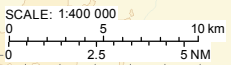
FAR 78
 FL195
 GND

UTREX (IAF) FL105
 MAX 180KT IAS

Legend

TMAA Kruger Mpumalanga
 FL145
 5500FT ALT
 119.25

- NOTE**
1. Birds in vicinity of airport and wildlife may be present if fencing is breached.
 2. Noise sensitive area.
 3. Turns prior to MAPT prohibited.
 4. If entering FAKN TMA, contact FAKN TWR/APP on 119.20MHZ.

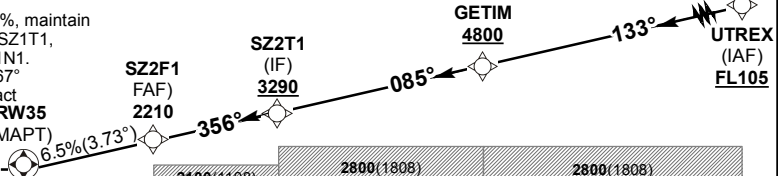


	31°20'E				31°30'E				31°40'E			
DIST (NM) to THR 35	0	1	2	3	4	5	6	7	8	9	10	10.8
DIST (NM) to Next WPT	MAPT	1	2	SZ2F1	1	2	SZ2T1	1	2	3	4	GETIM
ADVISORY ALT (HGT)		1440(448)	1840(848)	2210(1218)	2570(1578)	2920(1928)	3290(2298)	3610(2618)	3920(2928)	4240(3248)	4550(3558)	4800(3808)

TRANSITION ALT 9000
TRANSITION LEVEL ATC

INA ALT: FL105 or higher MSA

MISSED APPROACH:
 MAX 180KT IAS. Climbing 3.5%, maintain RWY track 356° to SZ1T1. At SZ1T1, turn left onto track 267° to SZ1N1. At SZ1N1 continue on track 267° climbing to 4800FT ALT. Contact Lowveld ASAP on 119.00MHZ.



THR ELEV 992
 NM to/from THR RWY 35

	0	1	2	3	4	5	6	7	8	9	10	11	28.8
				2100(1108)			2800(1808)					2800(1808)	

		MIN TEMP: 0°C	A	B	C	GS	KT	80	100	120	140	160
Straight-in Approach	LNAV	3.5%MDA(H)	1340 (348)	1340 (348)	1340 (348)	FAF to MAPT	M:S	2:12	1:46	1:28	1:21	1:15
	RVR	3.5%MDA(H)	1500m	1500m	1800m	Rate of descent	FPM	528	660	792	858	924
	LNAV	2.5%MDA(H)	2100 (1108)	2100 (1108)	2100 (1108)	3.5% Climb Gradient	FPM	284	355	426	496	567
	RVR	2.5%MDA(H)	1500m	1500m	2000m	2.5% Climb Gradient	FPM	203	253	304	355	405

NOTE:
 1. Circle to land not applicable.

CHANGE: LASS FREQ/ MAG VAR